

ProcessPower KD700

High-pressure pump units with the optimum power range for a whole variety of applications of high pressure cleaning up to oleochemicals, hydrostatic bearing lubrication and injection. Most suitable for continuous operation and industrial use under extreme loads.



High-pressure pump unit KD724 on base frame with suction and discharge sided pulsation dampers

	KD708	KD719	KD724	KD725
Drive power pump	75 kW	110 kW	170 kW	270 kW
Pressure max.	1,200 bar	2,800 bar	3,000 bar	2,800 bar
Flow rate max.	295 l/min at 135 bar 30 l/min at 1,200 bar	432 l/min at 125 bar 14.7 l/min at 2,800 bar	615 l/min at 130 bar 20 l/min at 3,000 bar	715 l/min at 200 bar 34 l/min at 2,800 bar
Weight	1,200 kg	1,300 kg	3,000 kg	3,500 kg
Dimensions	1,900x1,300x900 mm	1,900x1,300x900 mm	2,500x1,700x1,200 mm	2,700x1,800x1,200 mm



High-pressure pump unit KD724 with suction valve release for fast and accurate load changes as well as sensors for operating data logging



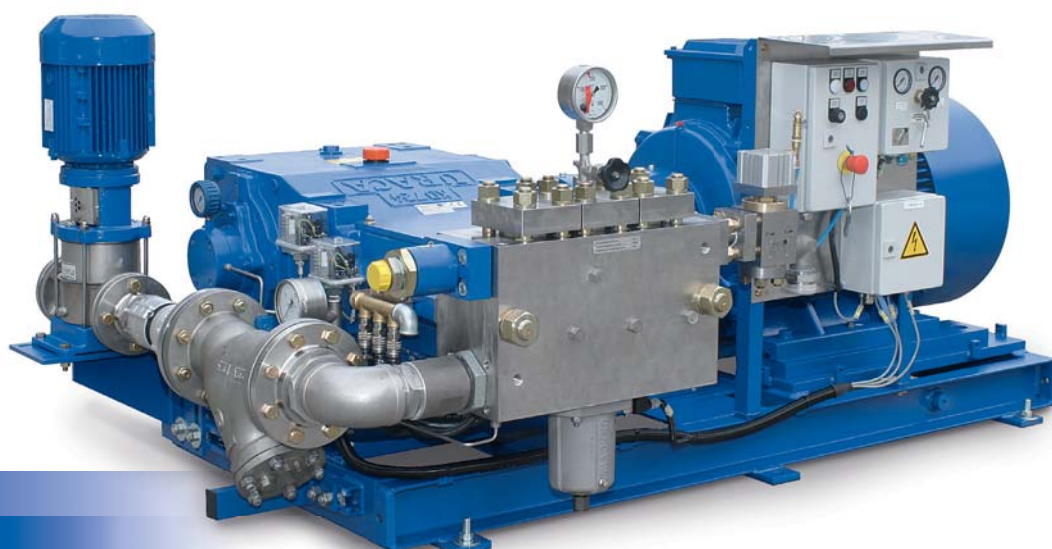
High-pressure pump unit KD719 with belt-drive



High-pressure pump unit KD719
on base frame according to ATEX



High-pressure pump unit KD708
according to ATEX with hose reel



High-pressure pump unit
KD724 with booster pump