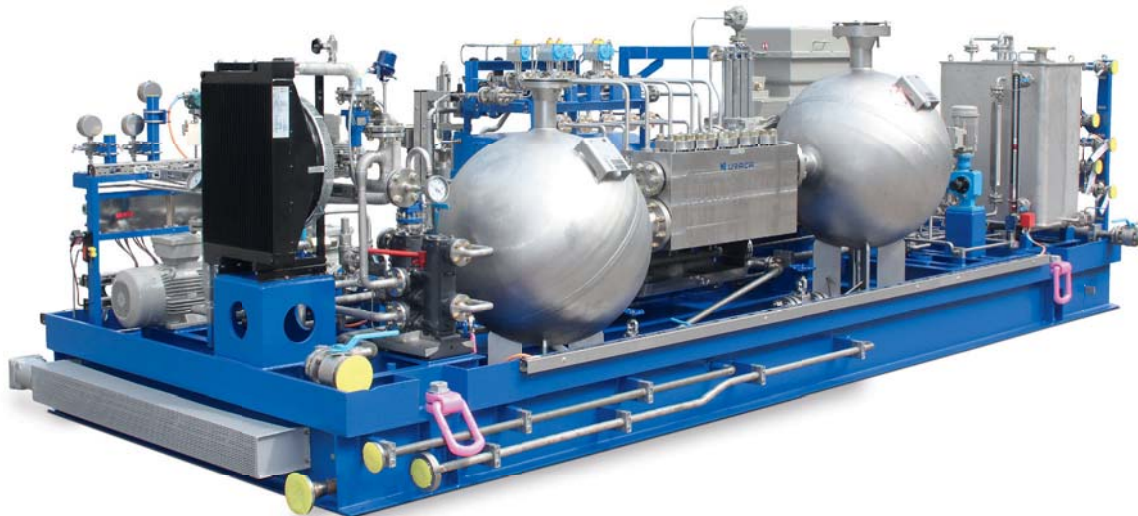


ProcessPower Px-70

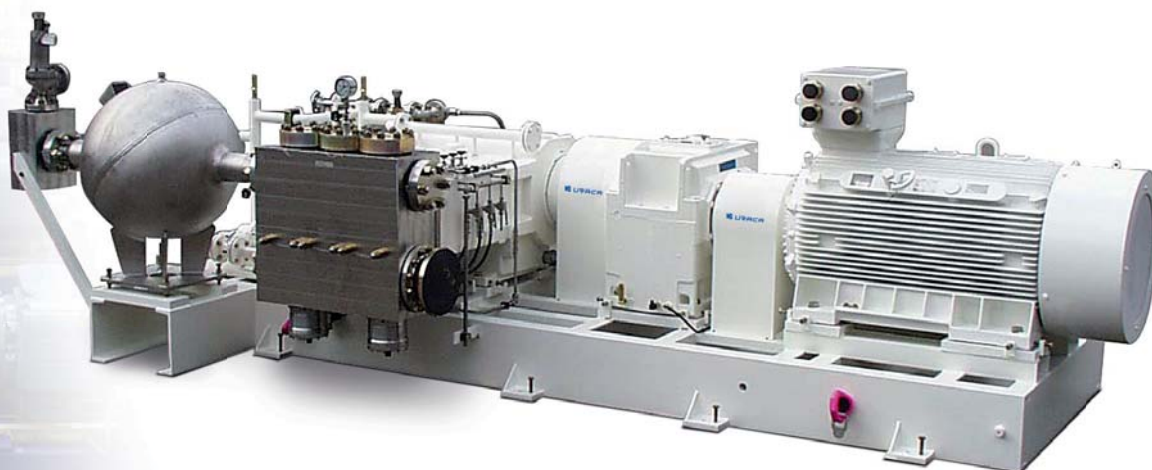


High-pressure pump unit P5-70 with suction and discharge sided resonators and lube oil system

The highly reliable pump units of the Px-70 and Px-80 series have been developed in line with latest design features. Particularly suitable for industrial use, especially in continuous operation.

	P3-70	P4-70	P5-70
Drive power pump	330 kW	440 kW	550 kW
Pressure max.	2,800 bar	2,800 bar	2,800 bar
Flow rate max.	910 l/min at 195 bar 42 l/min at 2,800 bar	975 l/min at 250 bar 56 l/min at 2,800 bar	1,220 l/min at 250 bar 70 l/min at 2,800 bar
Weight	5,000 kg	5,500 kg	6,000 kg
Dimensions	2,700x1,800x1,200 mm	2,700x1,800x1,200 mm	3,000x1,800x1,200 mm

ProcessPower Px-80



	P3-80	P5-80
Drive power pump	680 kW	1,150 kW
Pressure max.	1,600 bar	1,600 bar
Flow rate max.	3,800 l/min at 100 bar 220 l/min at 1,600 bar	6,300 l/min at 100 bar 340 l/min at 1,600 bar
Weight	11,000 kg	18,000 kg
Dimensions	3,300x2,500x1,500 mm	4,000x2,500x1,500 mm

High-pressure pump unit P3-80 with integrated suction sided pulsation dampers and discharge sided ball resonator